

TAIT COMMUNICATIONS TRUNKED RADIO **PROGRAMMING GUIDE**

- 1. Changes Made Since Last Programming Guide**
- 2. TeamTalk TaitNet - T2000 Mobiles**
- 3. TeamTalk TaitNet - T3000 Handportables**
- 4. TeamTalk TaitNet - 5000 Series and Tait Orca Series**
- 5. Summary of TeamTalk TaitNet Parameters**
- 6. TeamTalk ActionNet - T2000 Mobiles**
- 7. TeamTalk ActionNet - T3000 Handportables**
- 8. TeamTalk ActionNet - 5000 Series and Tait Orca Series**
- 9. Summary of TeamTalk ActionNet Parameters**
- 10. Other Equipment Manufactures Summary**

Please visit

<http://support.taitworld.com/>

There is a software matrix that lists the latest versions of programming software and radio firmware that are available.

**PLEASE NOTE:
TAIT RECOMMEND THAT EACH TIME YOU READ A
RADIO OR LOAD A DATA FILE, ALL PARAMETERS
ARE CHECKED BEFORE THE RADIO IS
PROGRAMMED.**

1. Changes Made Since Last Programming Guide

T2000 Trunked Radios:

1. **Reset On Error** should always be set to **Enabled**.

This field needs to be checked every time a radio is programmed that it is enabled.

To access this field in the T203X programming software **Technician** needs to be entered instead of **K1W1** when the programming software is started.

This option is in the Unit-Diagnostics page.

2. **Auto Register at Power On**, this field needs to be **Enabled**.

This will force the radio to register onto the system every time the radio is switched on. This eliminates the need to hold the PTT in while turning on to force the radio to register onto the system

3. **Unit Miscellaneous Controls: Single Press PTT Call** **Enabled**

When this field is disabled a separate press of the PTT button is needed after a call is initiated before the user can begin to talk.

4. **Unit Miscellaneous Controls: Join Busy Group** **Enabled**

Some networks send repeat go-to-channel messages. On such networks, a radio can make a call to a group it is not subscribed to and if a group call is already in progress, the radio will be directed to the allocated traffic channel. When the Join Busy Group field is enabled, the radio will be able to join busy groups.

Note that on some trunked radio networks group call amalgamation will occur automatically regardless of what this field is set to.

Tait Orca 5000 Series Radios

1. **Reregister on Power-up** this field needs to be **Enabled**.

This will force the radio to register onto the system every time the radio is switched on. This eliminates the need to hold the PTT in while turning on to force the radio to register onto the system

2. **Audio Noise Reduction**, this field needs to be **Enabled**.

When the Audio Noise Reduction field is checked, weak signals such as background noise are reduced when the mute is open and nobody is talking on the channel. This applies to all channels.

2. TeamTalk TaitNet - T2000 Mobiles



The following are settings for the TeamTalk TaitNet network.

Noise Blanker: This should be **Disabled** in all radios

All UHF T2000 trunk radios operating on the TaitNet system should have the noise blanker disabled. Radios which have had the noise blanker disabled can be identified by checking the radio type number. T20xx-523-Cxx = noise blanker disabled. Refer to TN-609, which describes how to perform this modification. (Remove R133)

Economiser: This should be set to **15 minutes or longer**.

There are certain versions of firmware in radios where the economiser cannot be disabled. The programming software will automatically set this to 10 seconds, and this will cause calls to be dropped when they should not be cleared down. To stop this from occurring the Economiser should be enabled and set to 15 minutes or longer.

Multiple Registration: This should be set to **Disabled**

Whenever a radio is read or a datafile is loaded, this setting is always set to enabled by the programming software, when it should be disabled. Whenever a radio is read or a datafile is loaded, this should be checked before the radio is programmed.

Reset on Error: This should always be set to **Enabled**.

This field needs to be checked every time a radio is programmed that it is enabled.

To access this field in the T203X programming software **TECHNICIAN** needs to be entered instead of **K1W1** when the programming software is started. This option is in the Unit-Diagnostics page.

Call Queuing: This should be set to **Unanswered**.

The only exception is for radios that are connected to a data despatch package. Call queuing needs to be disabled, otherwise there will be problems with 'Not Homes' occurring when the status queue is full.

Auto Register at Power On: This field needs to be **Enabled**.

This will force the radio to register onto the system every time the radio is switched on. This eliminates the need to hold the PTT in while turning on to force the radio to register onto the system.

Unit Identity Page:	Control Category	A
Unit Dialing Facilities:	Data Calls	Enabled
Unit Miscellaneous Controls:	Single Press PTT Call	Enabled
	Join Busy Group	Enabled
Own Fleet Parameters:	Dialing Scheme	MPT1343
	Full Off Air Call Set up	Allowed
	Default Call time limit	180 Secs
	Emergency Call time limit	780 Secs
	Call timer Count up	Disabled
	Ignore TSC Call Time limit	Disabled

The table below indicates what radio firmware version supports the features listed. If the radio firmware version is greater than in the table then it supports that feature.

E.G. For the T2040 if the firmware is above V5.20 then it supports the vote now feature.

Background Hunt	T2030 ≥ V3.XX	T2035 ≥ V3.XX	T2040 ≥ V5.XX
Vote Now	T2030 ≥ V3.10	T2035 ≥ V3.10	T2040 ≥ V5.20
NDD preference	T2030 ≥ V3.XX	T2035 ≥ V3.XX	T2040 ≥ V4.XX
Join Busy Group	Not Available	T2035 ≥ V3.53	T2040 ≥ V5.65
Auto Register on Power on	T2030 ≥ V3.30	T2035 ≥ V3.51	T2040 ≥ V5.63
Single Press PTT	T2030 ≥ V3.29	T2035 ≥ V3.51	T2040 ≥ V5.63

NETWORK SETTING - TRUNKED CHANNEL BLOCKS

G:\Taitnet\Technical Help\T2000\T2040\Datafile\bre\T2040 Tait Comms Fleetlink radio 223.t2t - T2000 Trunked Programming Application (2.55.0.2)

File Edit Radio Network Tools Help

Radio Model T2030 T2035 T2040

Specifications

- Network Setting
 - Trk Chan Block
 - Network Ident
 - Network Param
 - Hunting Param
 - ANN Interfleet
- Fleet Settings
 - Fleet Identity
 - Fleet Parameter
 - Conv Channels
- Radio Unit
 - Radio Unit ID
 - Acquisition Dat.
 - CCI Setup
 - Data Parameter
 - Status Message
 - Power Saving
- Radio Calls
 - Preset Calls
 - 5 Digit Lookup
 - External Calls
 - Call Options
- Customise Radio
 - External Alert
 - Key Settings
 - Interface Option

Trk Chan Blocks

Start Channel	Stop Channel	Start Rx Freq	Rx Spacing	Start Tx Freq	Tx Spacing	Power
1	480	414.01250	012.50	406.01250	012.50	High

Trunked Channel Barring

Bar Access: Rx Bar Frequency:

Buttons: Add, Insert, Repeat, Delete

Database Version: 0506 Last action: Opened file 'T2040 Tait Comms Fleetlink radio 223.t2t'

NETWORK SETTING - NETWORK IDENTITY

G:\Taitnet\Technical Help\T2000\T2040\Datafile\bre\T2040 Tait Comms Fleetlink radio 223.t2t - T2000 Trunked Programming Application (2.55.0.2)

File Edit Radio Network Tools Help

Radio Model T2030 T2035 T2040

Specifications

- Network Setting
 - Trk Chan Block
 - Network Ident
 - Network Param
 - Hunting Param
 - ANN Interfleet
- Fleet Settings
 - Fleet Identity
 - Fleet Parameter
 - Conv Channels
- Radio Unit
 - Radio Unit ID
 - Acquisition Dat.
 - CCI Setup
 - Data Parameter
 - Status Message
 - Power Saving
- Radio Calls
 - Preset Calls
 - 5 Digit Lookup
 - External Calls
 - Call Options
- Customise Radio
 - External Alert
 - Key Settings
 - Interface Option

Network Identity

Network

Signalling Type:

NIC Code

0

Buttons: Add, Delete

Network Options

SYNC Sequence:

Area Field Length:

Zone Field Length:

SIL Field Length:

Pressel On Messages:

Pressel Off Messages:

Multiple Registration:

Transmit Slot Timing:

Value Of INFO In RQR:

Database Version: 0506 Last action: Opened file 'T2040 Tait Comms Fleetlink radio 223.t2t'

NETWORK SETTING - NETWORK PARAMETERS

G:\Taitnet\Technical Help\T2000\T2040\Datafile\bre\T2040 Tait Comms Fleetlink radio 223.t2t - T2000 Trunked Programming Application (2.55.0.2)

File Edit Radio Network Tools Help

Radio Model T2030 T2035 T2040

Specifications

- Network Setting
 - Trk Chan Block
 - Network Ident
 - Network Param
 - Hunting Param
 - ANN Interflect
- Fleet Settings
 - Fleet Identity
 - Fleet Parameter
 - Conv Channels
- Radio Unit
 - Radio Unit ID
 - Acquisition Dat.
 - CCI Setup
 - Data Parameter
 - Status Messagr
 - Power Saving
- Radio Calls
 - Preset Calls
 - 5 Digit Lookup
 - External Calls
 - Call Options
- Customize Radioc
 - External Alert
 - Key Settings
 - Interface Optior

Network Params

Control Channel Acquisition/Retention

	Continuous	Time-shared
NZ1	1	
NZ2	3	
TS	5	
NC1	20	5
NC2	15	54
NV	1	1
NX1	15	2
NX2	10	3

Signalling Parameters

NT	103	TJ	60
NW	4	TN	10
ND1	3	TT	60
ND2	5	TA	60
NE	16	TB	2
NR	8	TP	5
NI	4	TW	60
TC	60	TI	2
TD	60		

Background Hunt Parameters

TL (min)	2	TL (sec)	0
TH	2	LM1	6
NS	2	LM2	6
		LM3	3

Database Version: 0506 | Min: 1 | Max: 255 | Last action: Opened file 'T2040 Tait Comms Fleetlink radio 223.t2t'

NETWORK SETTINGS - HUNTING PARAMETERS

G:\Taitnet\Technical Help\T2000\T2040\Datafile\bre\T2040 Tait Comms Fleetlink radio 223.t2t - T2000 Trunked Programming Application (2.55.0.2)

File Edit Radio Network Tools Help

Radio Model T2030 T2035 T2040

Specifications

- Network Setting
 - Trk Chan Block
 - Network Ident
 - Network Param
 - Hunting Param
 - ANN Interflect
- Fleet Settings
 - Fleet Identity
 - Fleet Parameter
 - Conv Channels
- Radio Unit
 - Radio Unit ID
 - Acquisition Dat.
 - CCI Setup
 - Data Parameter
 - Status Messagr
 - Power Saving
- Radio Calls
 - Preset Calls
 - 5 Digit Lookup
 - External Calls
 - Call Options
- Customize Radioc
 - External Alert
 - Key Settings
 - Interface Optior

Hunting Params

Normal Hunt Channels

Channel	Type
121	Continuous
123	Continuous
124	Continuous
125	Continuous
127	Continuous
129	Continuous
133	Continuous
134	Continuous
135	Continuous
140	Continuous
201	Continuous
203	Continuous

Non Applicable Channels

From	To
------	----

Parameters

Nokia TS Channel Support

Background Hunt

Comprehensive Hunt

Act On Vote Now Advice BCASTs

Vote Now Advice Margin

Site Select And Resuming Hunt

Database Version: 0506 | Min: 1 | Max: 1023 | Last action: Opened file 'T2040 Tait Comms Fleetlink radio 223.t2t'

Normal Hunt Channel List:

121, 123, 124, 125, 127, 129, 133, 134, 135, 140, 201, 203, 204, 205, 207, 209, 213, 214, 215, 220, 301, 303, 304, 305, 307, 309, 310, 311, 312, 313, 314, 315

FLEET SETTINGS -FLEET PARAMETERS

G:\Taitnet\Technical Help\T2000\T2040\Datafile\bre\T2040 Tait Comms Fleetlink radio 223.t2t - T2000 Trunked Programming Application (2.55.0.2)

File Edit Radio Network Tools Help

Radio Model T2030 T2035 T2040

Specifications

- Network Setting
 - Trk Chan Block
 - Network Ident
 - Network Param
 - Hunting Param
 - ANN Unchecked
- Fleet Settings
 - Fleet Identity
 - Fleet Parameters
 - Conv Channels
- Radio Unit
 - Radio Unit ID
 - Acquisition Dat
 - CCI Setup
 - Data Parameter
 - Status Messag
 - Power Saving
- Radio Calls
 - Preset Calls
 - 5 Digit Lookup
 - External Calls
 - Call Options
- Customise Radi
 - External Alert
 - Key Settings
 - Interface Optio

Fleet Parameters

Despatcher

Prime Despatcher Number

Default Call Time Limit

Enable

Time

Emergency

Prime Emergency Number

Emergency Call Time Limit

Enable

Time

Prime Emergency Address Prefix

Prime Emergency Address Ident

Features

Full Off Air Call Setup

Call Timer Count Up

MPT Dynamic Regrouping

Parameters

Data Call Time Limit

Ignore TSC Call Time Limit

Database Version: 0506 Last action: Opened file 'T2040 Tait Comms Fleetlink radio 223.t2t'

UNIT - DATA PARAMETERS

G:\Taitnet\Technical Help\T2000\T2040\Datafile\bre\T2040 Tait Comms Fleetlink radio 223.t2t - T2000 Trunked Programming Application (2.55.0.2)

File Edit Radio Network Tools Help

Radio Model T2030 T2035 T2040

Specifications

- Network Setting
 - Trk Chan Block
 - Network Ident
 - Network Param
 - Hunting Param
 - ANN Unchecked
- Fleet Settings
 - Fleet Identity
 - Fleet Parameters
 - Conv Channels
- Radio Unit
 - Radio Unit ID
 - Acquisition Dat
 - CCI Setup
 - Data Parameter
 - Status Messag
 - Power Saving
- Radio Calls
 - Preset Calls
 - 5 Digit Lookup
 - External Calls
 - Call Options
- Customise Radi
 - External Alert
 - Key Settings
 - Interface Optio

Data Parameters

Short Data Messages

Short Data Messages

TGI Timer

TGG Timer

Call Queued Tones

SDM Despatcher Call String

Hook Signalling

Tait Data Protocol

Tait Data Protocol

Num Retries

Lead In Tone

Lead Out Tone

SYND Sequence

Wait Ack

Timer DCI

A Wait

B Wait

Database Version: 0506 Last action: Opened file 'T2040 Tait Comms Fleetlink radio 223.t2t'

3. TeamTalk TaitNet - T3000 Handportables



Unit Identity Page:	Control Category Call Queuing	A Unanswered
Own Fleet Identity:	Dialing Scheme	MPT1343
Own Fleet Parameters:	Full Off Air Call Set up	Allowed
	Default Call time limit	180 Secs
	Emergency Call time limit	780 Secs
	Call timer Count up	Disabled
	Ignore TSC Call Time limit	Disabled

The table below indicates what radio firmware version supports the features listed. If the radio firmware version is greater than in the table then it supports that feature. E.G. For the T3040 if the firmware is above V2.21 then it supports the vote now feature.

Background Hunt	T3030 ≥ V2.XX	T3035 ≥ V2.XX	T3040 ≥ V2.XX
Vote Now	T3030 ≥ V2.11	T3035 ≥ V2.12	T3040 ≥ V2.21
NDD preference	T3030 ≥ V2.XX	T3035 ≥ V2.XX	T3040 ≥ V2.XX

UNIT AQUISITION DATA

Unit - Acquisition Data

Print

Acquisition Authorisation (maximum of 8 definitions)	
Type	Code
!	!

NDD Preference Data (maximum of 4 definitions)		
Field Length	Priority	Value
!	!	!

Home Zone

NETWORK IDENTITY

Network - Identity

Print

Network Type	<input type="text" value="National"/>
Network Identity Code	<input type="text" value="0"/>
SYNC Sequence	<input type="text" value="C4D7"/>
Area Field Length (LA)	<input type="text" value="7"/>
Zone Field Length (LZ)	<input type="text" value="3"/>
SIL Field Length (LSIL)	<input type="text" value="0"/>
Number of Pressel On Messages (NPON)	<input type="text" value="1"/>
Number of Pressel Off Messages (NPOFF)	<input type="text" value="1"/>
Pre-Emphasis	<input type="text" value="Other"/>
Transmit Slot Timing	<input type="text" value="MPT"/>

NETWORK PARAMETERS

Network - Parameters
Print

(1) Control Channel Acquisition/Retention

	Continuous	Time-shared			
NC1	<input type="text" value="20"/>	<input type="text" value="6"/>	NZ1	<input type="text" value="1"/>	
NC2	<input type="text" value="15"/>	<input type="text" value="54"/>	NZ2	<input type="text" value="3"/>	
NU	<input type="text" value="1"/>	<input type="text" value="1"/>	TS	<input type="text" value="5"/>	seconds
NX1	<input type="text" value="15"/>	<input type="text" value="2"/>			
NX2	<input type="text" value="10"/>	<input type="text" value="3"/>			

(2) Signalling Parameters

NW	<input type="text" value="4"/>	TC	<input type="text" value="60"/>	seconds	TA	<input type="text" value="60"/>	seconds
ND1	<input type="text" value="3"/>	TD	<input type="text" value="60"/>	minutes	TB	<input type="text" value="2"/>	seconds
ND2	<input type="text" value="5"/>	TJ	<input type="text" value="60"/>	seconds	TP	<input type="text" value="5"/>	seconds
NE	<input type="text" value="16"/>	TN	<input type="text" value="10"/>	seconds	TW	<input type="text" value="60"/>	seconds
NR	<input type="text" value="8"/>	TT	<input type="text" value="60"/>	seconds			

Background Search Sequence Parameters

TL	<input type="text" value="120"/>	seconds	LM1	<input type="text" value="6"/>	dB
TH	<input type="text" value="2"/>	Slots	LM2	<input type="text" value="6"/>	dB
NS	<input type="text" value="2"/>		LM3	<input type="text" value="3"/>	dB

NETWORK HUNT PARAMETERS

Network - Hunt Parameters

Print

Nokia TS Channel Support

Background Hunt

Hunt Upon Expiry of NE or NR

Comprehensive Hunt

Act On Vote Now

Vote Now Advice Margin dB

Normal Hunt Channels (Maximum of 32 channels)	
Channel	Type
121	Continuous
123	Continuous
124	Continuous
125	Continuous
127	Continuous
129	Continuous
133	Continuous
134	

Non Applicable Channels (Maximum of 10 blocks)	
From	To
!	!

Normal Hunt Channel List: 121, 123, 124, 125, 127, 129, 133, 134, 135, 140, 201, 203, 204, 205, 207, 209, 213, 214, 215, 220, 301, 303, 304, 305, 307, 309, 310, 311, 312, 313, 314, 315

Vote now advice Margin 6 dB

T3000 Trunked radios with following version of firmware have a known problem where they vote incorrectly if set to 6 dB. Please ensure these radios have the vote now margin set to 5 dB for this parameter.

T3035 radios with V2.12 firmware should be set to 5 dB
T3040 radios with V2.21 firmware should be set to 5 dB

NETWORK TRUNKED CHANNEL BLOCKS

Network - Trunked Channel Blocks

Print

F2 to Insert a Row : F3 to delete a Row

(maximum of 30 blocks)

CHANNEL		RECEIVER	TRANSMITTER	Power
Start	Stop	Frequency	Frequency	
		KHz	MHz	MHz
1	480	12.50	414.01250	406.01250 High

4. TeamTalk TaitNet - 5000 Series and Tait Orca Series



Dynamic Power: This feature should be **Disabled**.

Dynamic Power needs to be removed from the user menu, function key menu, and also the dynamic power, initial setting needs to be disabled as this can reduce the overall performance of the radio by reducing the radio coverage.

Low Power: This feature should be **Disabled**.

Low Power needs to be removed from the user menu, function key menu, and also the low power initial setting needs to be disabled as this can reduce the overall performance of the radio by reducing the radio coverage.

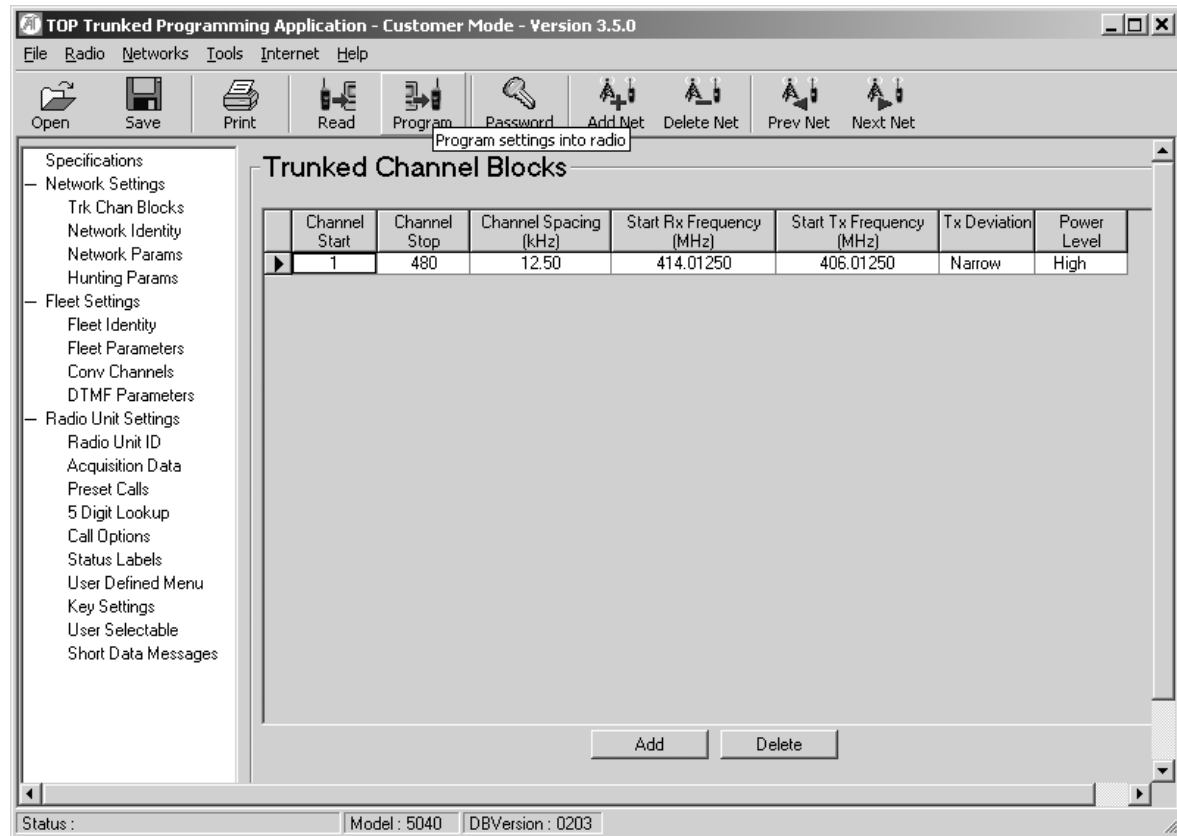
Fleet Identity:	Dialing Scheme	MPT1343
Fleet Parameters:	Full Call Off Air Setup	Enabled
	Default Call time limit	180 Secs
	Default Emergency Call time limit	780 Secs
	Call Timer Count up	Disabled
	Ignore TSC Call timer limit	Disabled
Call Options:	Call Queuing	Unanswered
	Unanswered Call Timer	10 Seconds
	Join Busy Group	Enabled
User Defined Menu:	User Setting Dyn Power Option	Disabled
	User Setting Low power Option	Disabled
User Selectable:	Initial Dynamic Power Setting	Disabled
	Initial Low power Transmit Setting	Disabled
	Auto Noise Reduction	Enabled
	Register On Power Up	Enabled

The table below indicates what radio firmware version supports the features listed. If the radio firmware version is greater than in the table then it supports that feature.

E.G. For the Excel if the firmware is above V3.XX then it supports the vote now feature.

Background Hunt	Elan ≥ V2.00	Excel ≥ V3.XX	50XX ≥ V4.XX
Vote Now	Elan ≥ V2.00	Excel ≥ V3.XX	50XX ≥ V4.XX
NDD preference	Elan ≥ V2.00	Excel ≥ V3.XX	50XX ≥ V4.XX

TRUNKED CHANNEL BLOCKS



NETWORK IDENTITY

TOP Trunked Programming Application - Customer Mode - Version 3.5.0

File Radio Networks Tools Internet Help

Open Save Print Read Program Password Add Net Delete Net Prev Net Next Net

Specifications

- Network Settings
 - Trk Chan Blocks
 - Network Identity
 - Network Params
 - Hunting Params
- Fleet Settings
 - Fleet Identity
 - Fleet Parameters
 - Conv Channels
 - DTMF Parameters
- Radio Unit Settings
 - Radio Unit ID
 - Acquisition Data
 - Preset Calls
 - 5 Digit Lookup
 - Call Options
 - Status Labels
 - User Defined Menu
 - Key Settings
 - User Selectable
 - Short Data Messages

Network Identity

Network

Network Type: National

Network Identity Code
0

Add Delete

Network Options

SYNC Sequence: C4D7

Area Field Length (LA): 7

Zone Field Length (LZ): 3

SIL Field Length (LSIL): 0

Number of Press On Messages (NPON): 1

Number of Press Off Messages (NPOFF): 1

Pre-Emphasis: Other

Multiple Registration: Disabled

Value of INFO in RQR: 0

Status: Model: 5040 DBVersion: 0203

NETWORK PARAMETERS

TOP Trunked Programming Application - Customer Mode - Version 3.5.0

File Radio Networks Tools Internet Help

Open Save Print Read Program Password Add Net Delete Net Prev Net Next Net

Specifications

- Network Settings
 - Trk Chan Blocks
 - Network Identity
 - Network Params
 - Hunting Params
- Fleet Settings
 - Fleet Identity
 - Fleet Parameters
 - Conv Channels
 - DTMF Parameters
- Radio Unit Settings
 - Radio Unit ID
 - Acquisition Data
 - Preset Calls
 - 5 Digit Lookup
 - Call Options
 - Status Labels
 - User Defined Menu
 - Key Settings
 - User Selectable
 - Short Data Messages

Network Parameters

Control Channel Acquisition/Retention

		Continuous	Time-Shared
NZ1	1	NC1: 20	6
NZ2	3	NC2: 15	54
TS	5 sec	NV: 1	1
L1	0 dB	NX1: 15	2
		NX2: 10	3

Background Search Parameters

TL	120 sec	LM1	6 dB
TH	2 slots	LM2	6 dB
NS	2	LM3	3 dB
		LM4	3 dB

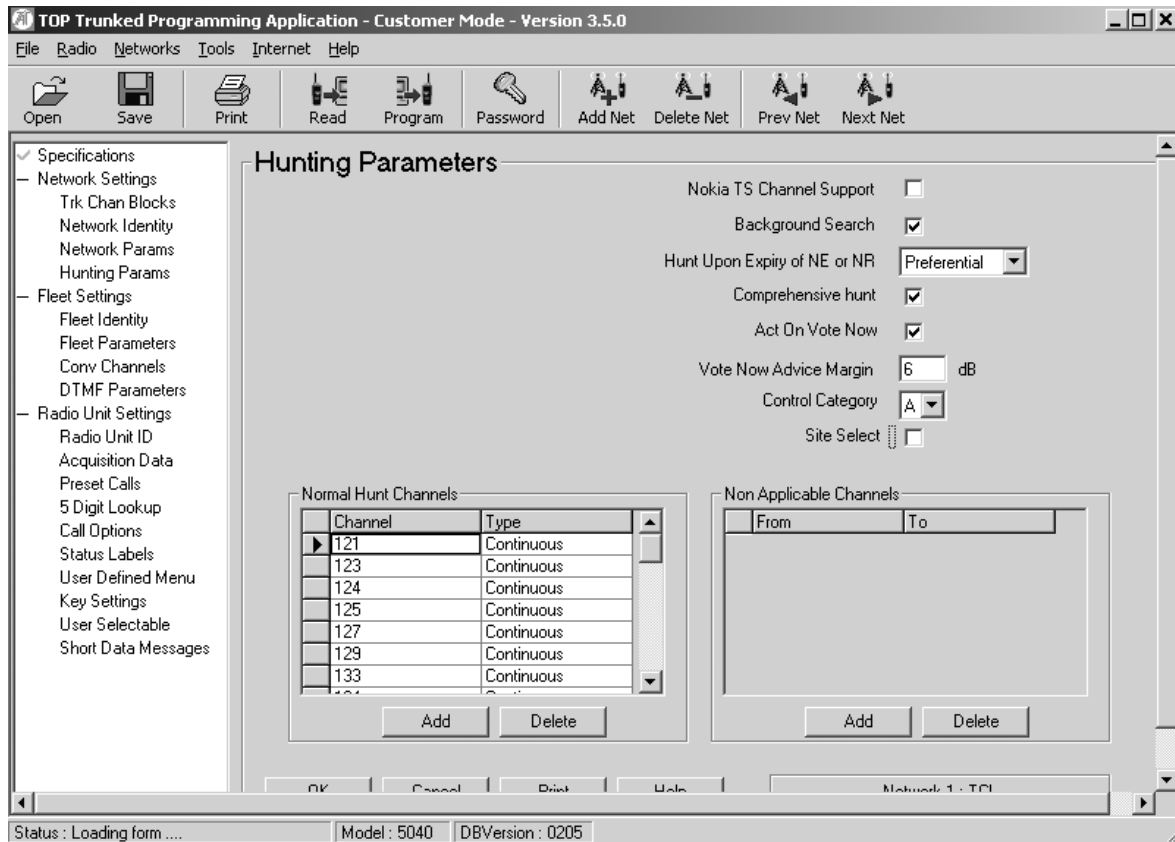
Signalling Parameters

NW	4
ND1	3
ND2	5
NE	16
NR	8
TC	60 sec
TD	60 min
TJ	60 sec
TN	10 sec
TT	60 sec
TA	60 sec
TB	2 sec
TP	5 sec
TW	60 sec

OK Cancel Print Help Network 1: TC1

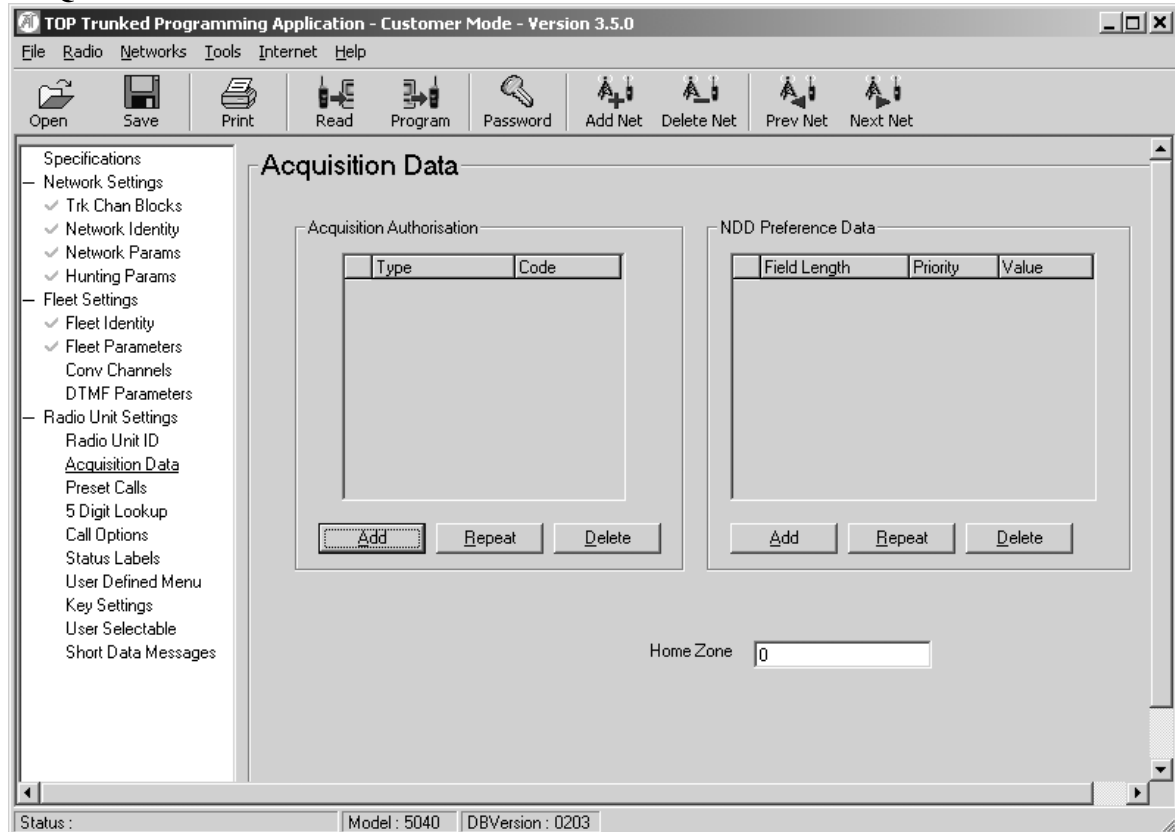
Status: Model: 5040 DBVersion: 0205 Min Value: 0 Max Value: 40

HUNTING PARAMETERS



Hunt Channel List: 121, 123, 124, 125, 127, 129, 133, 134, 135, 140, 201, 203, 204, 205, 207, 209, 213, 214, 215, 220, 301, 303, 304, 305, 307, 309, 310, 311, 312, 313, 314, 315

ACQUISITION DATA



5. Summary of TeamTalk TaitNet Parameters

TeamTalk TaitNet Network Parameters 21 May 2001						
For Tait Radios						
Variable Name		Mobile	Portable			
NC1	CONTIN	20	20		Lowest Chan	1
NC2	CONTIN	15	15		Highest Chan	480
NX1	CONTIN	15	15			
NX2	CONTIN	10	10			
NZ1		1	1	Comprehensive hunt		On
NZ2		3	3	Background Hunt		On
ND1		3	3			
ND2		5	5	Network type		National
NE		16	16	Network ID		0
NI		4	4	Dialing Scheme		MPT1343
NR		8	8	Control category		A
NT		103	103	Full off air call set up		Yes
NW		4	4	Default call time limit		180 sec
TA		60	60	Emg call time limit		780 sec
TB		2	2	Data call time limit		180 sec
TC		60	60	Call timer count up		No
TD		60	60	Ignore TSC call time limit		No
TI		2	2	Nokia TS support		No
TJ		60	60	Act on vote now		Yes
TN		10	10			
TP		5	5	<i>Freq Range start channel</i>	1	
TS		5	5	<i>Freq Range stop channel</i>	480	
TT		60	60			
TW		60	60			
TL		2 m	120 secs	RX	414.01250	
TH		2	2	TX	406.01250	
NS		2	2			
NV		1	1			
LM1		6	6			
LM2		6	6			
LM3		3	3			
NPON		1	1			
NPOFF		1	1			
LA		7	7			
LZ		3	3			
LSIL		0	0			
VOTE NOW LEVEL		6	6			
HOME ZONE		0	0			
N VOTE		1	1			
T VOTE		10	10			
LM VOTE		6	6			

Channels (Control)

121,123,124,125,127,129,133,134,135,140,201,203,204,205,207

209,213,214,215,220,301,303,304,305,307,309,310,311,312,313,314,315

6. TeamTalk ActionNet - T2000 Mobiles



The following are settings for the TeamTalk ActionNet network.

Noise Blanker: This should be **Disabled** in all radios

All UHF T2000 trunk radios operating on the TaitNet system should have the noise blanker disabled. Radios which have had the noise blanker disabled can be identified by checking the radio type number. T20xx-523-Cxx = noise blanker disabled. Refer to TN-609 which describes how to perform this modification. (Remove R133)

Economiser: This should be set to **15 minutes or longer**.

There are certain versions of firmware in radios where the economiser cannot be disabled. The programming software will automatically set this to 10 seconds, and this will cause calls to be dropped when they should not be cleared down. To stop this from occurring the Economiser should be enabled and set to 15 minutes or longer.

Multiple Registration: This should be set to **Disabled**

Whenever a radio is read or a datafile is loaded, this setting is always set to enabled by the programming software, when it should be disabled. Whenever a radio is read or a datafile is loaded, this should be checked before the radio is programmed.

Reset on Error: This should always be set to **Enabled**.

This field needs to be checked every time a radio is programmed that it is enabled.

To access this field in the T203X programming software **TECHNICIAN** needs to be entered instead of **K1W1** when the programming software is started. This option is in the Unit-Diagnostics page.

Call Queuing: This should be set to **Unanswered**.

The only exception is for radios that are connected to a data despatch package. Call queuing needs to be disabled; otherwise there will be problems with 'Not Homes' occurring when the status queue is full

Auto Register at Power On: This field needs to be **Enabled**.

This will force the radio to register onto the system every time the radio is switched on. This eliminates the need to hold the PTT in while turning on to force the radio to register onto the system

Unit Identity Page:	Control Category	A
Unit Preset Calls:	TeamTalk Helpdesk 202,2001,200	Number 9
Unit Dialing Facilities:	Data Calls	Enabled
	ALLI calls	Disabled
	Network Operator Service Calls	Disabled
	Technician Calls	Disabled
Unit Miscellaneous Controls:	Single Press PTT Call	Enabled
	Join Busy Group	Enabled
Own Fleet Parameters:	Dialing Scheme	MPT1343
	Full Off Air Call Set up	Allowed
	Default Call time limit	0 Secs
	Default Emergency Call time limit	0 Secs
	Default Data Call time limit	180 Secs
	Call timer Count up	Enabled
	Ignore TSC Call Time limit	Disabled

The table below indicates what radio firmware version supports the features listed. If the radio firmware version is greater than in the table then it supports that feature.

E.G. For the T2040 if the firmware is above V5.20 then it supports the vote now feature.

Background Hunt	T2030 ≥ V3.XX	T2035 ≥ V3.XX	T2040 ≥ V5.XX
Vote Now	T2030 ≥ V3.10	T2035 ≥ V3.10	T2040 ≥ V5.20
NDD preference	T2030 ≥ V3.XX	T2035 ≥ V3.XX	T2040 ≥ V4.XX
Join Busy Group	Not Available	T2035 ≥ V3.53	T2040 ≥ V5.65
Auto Register on Power on	T2030 ≥ V3.30	T2035 ≥ V3.51	T2040 ≥ V5.63
Single Press PTT	T2030 ≥ V3.29	T2035 ≥ V3.51	T2040 ≥ V5.63

NETWORK SETTING - TRUNKED CHANNEL BLOCKS

G:\Taitnet\Customers\TeamTalk\Dealer Trunking Guide\DataFile Originals\T2040TN.DAT - T2000 Trunked Programming Application (2.55.0.2)

File Edit Radio Network Tools Help

Radio Model T2030 T2035 T2040

Specifications

- Network Settings
 - Trk Chan Blocks
 - Network Identity
 - Network Params
 - Hunting Params
 - ANN Interfleet
- Fleet Settings
 - Fleet Identity
 - Fleet Parameters
 - Conv Channels
- Radio Unit
 - Radio Unit ID
 - Acquisition Data
 - CCI Setup
 - Data Parameters
 - Status Messages
 - Power Saving
- Radio Calls
 - Preset Calls
 - 5 Digit Lookup
 - External Calls
 - Call Options
- Customise Radio
 - External Alert
 - Key Settings
 - Interface Options

Trk Chan Blocks

Start Channel	Stop Channel	Start Rx Freq	Rx Spacing	Start Tx Freq	Tx Spacing	Power
1	480	414.01250	012.50	406.01250	012.50	High

Add Insert Repeat Delete

Database Version: 0506 | Last action: Opened file 'T2040TN.DAT'

NETWORK SETTINGS - NETWORK IDENTITY

G:\Taitnet\Customers\TeamTalk\Dealer Trunking Guide\DataFile Originals\T2040AN.DAT - T2000 Trunked Programming Application (2.55.0.2)

File Edit Radio Network Tools Help

Radio Model T2030 T2035 T2040

Specifications

- Network Settings
 - Trk Chan Blocks
 - Network Identity
 - Network Params
 - Hunting Params
 - ANN Interfleet
- Fleet Settings
 - Fleet Identity
 - Fleet Parameters
 - Conv Channels
- Radio Unit
 - Radio Unit ID
 - Acquisition Data
 - CCI Setup
 - Data Parameters
 - Status Messages
 - Power Saving
- Radio Calls
 - Preset Calls
 - 5 Digit Lookup
 - External Calls
 - Call Options
- Customise Radio
 - External Alert
 - Key Settings
 - Interface Options

Network Identity

Network: Signalling Type

NIC Code

1

Add Delete

Network Options

SYNC Sequence

Area Field Length

Zone Field Length

SIL Field Length

Pressel On Messages

Pressel Off Messages

Multiple Registration

Transmit Slot Timing

Value Of INFO In RQR

Database Version: 0506 | Last action: Opened file 'T2040AN.DAT'

NETWORK SETTINGS - NETWORK PARAMETERS

Database Version: 0506 Min: 1 Max: 255 Last action: Opened file 'T2040AN.DAT'

NETWORK SETTINGS - PARAMETERS

Database Version: 0506 Min: 1 Max: 1023 Last action: Opened file 'T2040AN.DAT'

Normal Hunt Channel List: 22, 26, 28, 36, 37, 38, 39, 122, 126, 128, 136, 137, 138, 139, 202, 206, 208, 216, 217, 218, 219, 302, 306, 308, 316, 317, 318, 319, 321, 361, 453, 478

FLEET SETTINGS - FLEET PARAMETERS

G:\Taitnet\Customers\TeamTalk\Dealer Trunking Guide\DataFile Originals\T2040AN.DAT - T2000 Trunked Programming Application (2.55.0.2)

File Edit Radio Network Tools Help

Radio Model T2030 T2035 T2040

Specifications

- Network Settings
 - Trk Chan Blocks
 - Network Identity
 - Network Params
 - Hunting Params
 - ANN Interfleet
- Fleet Settings
 - Fleet Identity
 - Fleet Parameters
 - Conv Channels
- Radio Unit
 - Radio Unit ID
 - Acquisition Data
 - DCI Setup
 - Data Parameters
 - Status Messages
 - Power Saving
- Radio Calls
 - Preset Calls
 - 5 Digit Lookup
 - External Calls
 - Call Options
- Customise Radio
 - External Alert
 - Key Settings
 - Interface Options

Fleet Parameters

Despatcher

Prime Despatcher Number

Default Call Time Limit

Enable

Time

Emergency

Prime Emergency Number

Prime Emergency Address Prefix

Prime Emergency Address Ident

Emergency Call Time Limit

Enable

Time

Features

Full Off Air Call Setup

Call Timer Count Up

Parameters

Data Call Time Limit

Ignore TSC Call Time Limit

Database Version: 0506 | Last action: Opened file 'T2040AN.DAT'

RADIO UNIT - DATA PARAMETERS

G:\Taitnet\Customers\TeamTalk\Dealer Trunking Guide\DataFile Originals\T2040AN.DAT - T2000 Trunked Programming Application (2.55.0.2)

File Edit Radio Network Tools Help

Radio Model T2030 T2035 T2040

Specifications

- Network Settings
 - Trk Chan Blocks
 - Network Identity
 - Network Params
 - Hunting Params
 - ANN Interfleet
- Fleet Settings
 - Fleet Identity
 - Fleet Parameters
 - Conv Channels
- Radio Unit
 - Radio Unit ID
 - Acquisition Data
 - DCI Setup
 - Data Parameters
 - Status Messages
 - Power Saving
- Radio Calls
 - Preset Calls
 - 5 Digit Lookup
 - External Calls
 - Call Options
- Customise Radio
 - External Alert
 - Key Settings
 - Interface Options

Data Parameters

Short Data Messages

Short Data Messages

TGI Timer

TGG Timer

Call Queued Tones

SDM Despatcher Call String

Hook Signalling

Tait Data Protocol

Tait Data Protocol

Num Retries

Lead In Tone

Lead Out Tone

SYND Sequence

Wait Ack

Timer DCI

A Wait

B Wait

Database Version: 0506 | Last action: Opened file 'T2040AN.DAT'

7. TeamTalk ActionNet - T3000 Handportables



Unit Identity Page:	Control Category Call Queuing	A Unanswered
Unit Preset Calls	TeamTalk Help Desk 2022001200	Number 9
Unit Dialing Facilities	ALLI Calls Network Operator Service Calls Technician Calls	Disabled Disabled Disabled
Own Fleet Identity:	Dialing Scheme	MPT1343
Own Fleet Parameters:	Full Off Air Call Set up Default Call time limit Emergency Call time limit Call timer Count up Ignore TSC Call Time limit	Allowed 0 Secs 0 Secs Enabled Disabled

The table below indicates what radio firmware version supports the features listed. If the radio firmware version is greater than in the table then it supports that feature. E.G For the T3040 if the firmware is above V2.21 then it supports the vote now feature.

Background Hunt	T3030 ≥ V2.XX	T3035 ≥ V2.XX	T3040 ≥ V2.XX
Vote Now	T3030 ≥ V2.11	T3035 ≥ V2.12	T3040 ≥ V2.21
NDD preference	T3030 ≥ V2.XX	T3035 ≥ V2.XX	T3040 ≥ V2.XX

UNIT ACQUISITION DATA

Unit - Acquisition Data

Print

Acquisition Authorisation (maximum of 8 definitions)	
Type	Code
!	!

NDD Preference Data (maximum of 4 definitions)		
Field Length	Priority	Value
!	!	!

Hone Zone

NETWORK IDENTITY

Network - Identity

Print

Network Type	<input type="text" value="National"/>
Network Identity Code	<input type="text" value="1"/>
SYNC Sequence	<input type="text" value="C4D7"/>
Area Field Length (LA)	<input type="text" value="6"/>
Zone Field Length (LZ)	<input type="text" value="3"/>
SIL Field Length (LSIL)	<input type="text" value="9"/>
Number of Pressel On Messages (NPON)	<input type="text" value="1"/>
Number of Pressel Off Messages (NPOFF)	<input type="text" value="1"/>
Pre-Emphasis	<input type="text" value="Other"/>
Transmit Slot Timing	<input type="text" value="MPT"/>

NETWORK PARAMETERS

Network - Parameters

Print

(1) Control Channel Acquisition/Retention

	Continuous	Time-shared		
NC1	<input type="text" value="10"/>	<input type="text" value="10"/>	NZ1	<input type="text" value="1"/>
NC2	<input type="text" value="21"/>	<input type="text" value="21"/>	NZ2	<input type="text" value="6"/>
NU	<input type="text" value="1"/>	<input type="text" value="1"/>	TS	<input type="text" value="5"/> seconds
NX1	<input type="text" value="2"/>	<input type="text" value="2"/>		
NX2	<input type="text" value="5"/>	<input type="text" value="5"/>		

(2) Signalling Parameters

NW	<input type="text" value="4"/>	TC	<input type="text" value="60"/> seconds	TA	<input type="text" value="30"/> seconds
ND1	<input type="text" value="3"/>	TD	<input type="text" value="10"/> minutes	TB	<input type="text" value="2"/> seconds
ND2	<input type="text" value="5"/>	TJ	<input type="text" value="20"/> seconds	TP	<input type="text" value="5"/> seconds
NE	<input type="text" value="16"/>	TN	<input type="text" value="7"/> seconds	TW	<input type="text" value="60"/> seconds
NR	<input type="text" value="8"/>	TT	<input type="text" value="60"/> seconds		

Background Search Sequence Parameters

TL	<input type="text" value="70"/> seconds	LM1	<input type="text" value="6"/> dB
TH	<input type="text" value="2"/> Slots	LM2	<input type="text" value="6"/> dB
NS	<input type="text" value="2"/>	LM3	<input type="text" value="6"/> dB

NETWORK PARAMETERS

Network - Hunt Parameters

Print

Nokia TS Channel Support: Disabled

Background Hunt: Enabled

Hunt Upon Expiry of NE or NR: Preferential

Comprehensive Hunt: Disabled

Act On Vote Now: Enabled

Vote Now Advice Margin: 6 dB

Normal Hunt Channels (Maximum of 32 channels)	
Channel	Type
22	Continuous
26	Continuous
28	Continuous
36	Continuous
37	Continuous
38	Continuous
39	Continuous
122	

Non Applicable Channels (Maximum of 10 blocks)	
From	To
!	!

Normal Hunt Channel List: 22, 26, 28, 36, 37, 38, 39, 122, 126, 128, 136, 137, 138, 139, 202, 206, 208, 216, 217, 218, 219, 302, 306, 308, 316, 317, 318, 319, 321, 361, 453, 478

Vote now advice Margin 6 dB

T3000 Trunked radios with following version of firmware have a known problem where they vote incorrectly if set to 6 dB. Please ensure these radios have the vote now margin set to 5 dB for this parameter.

T3035 radios with V2.12 firmware should be set to 5 dB

T3040 radios with V2.21 firmware should be set to 5 dB

NETWORK TRUNKED CHANNEL BLOCKS

Network - Trunked Channel Blocks

Print

F2 to Insert a Row : F3 to delete a Row

(maximum of 30 blocks)

CHANNEL			RECEIVER	TRANSMITTER	
Start	Stop	Spacing	Frequency	Frequency	Power
		KHz	MHz	MHz	
1	480	12.50	414.01250	406.01250	High

8. TeamTalk ActionNet - 5000 Series and Tait Orca Series



Dynamic Power: This feature should be **Disabled**.

Dynamic Power needs to be removed from the user menu, function key menu, and also the initial setting of the dynamic power needs to be disabled as this can reduce the overall performance of the radio

Low Power: This feature should be **Disabled**.

Low Power needs to be removed from the user menu, function key menu, and also the initial setting of the low power needs to be disabled as this can reduce the overall performance of the radio

Fleet Identity:	Dialing Scheme	MPT1343
Fleet Parameters:	Full Call Off Air Setup	Allowed
	Default Call time limit	0 Secs
	Default Emergency Call time limit	0 Secs
	Call Timer Count up	Enabled
	Ignore TSC Call timer limit	Disabled
Call Options:	ALLI Calls	Disabled
	Network Operator Service Calls	Disabled
	Technician Calls	Disabled
	Call Queuing	Unanswered
	Unanswered Call Timer	20 Seconds
User Defined Menu:	Join Busy Group	Enabled
	User Setting Dyn Power Option	Disabled
	User Setting Low power Option	Disabled
User Selectable:	Initial Dynamic Power Setting	Disabled
	Initial Low power Transmit Setting	Disabled
	Auto Noise Reduction	Enabled
	Register On Power Up	Enabled
Preset Calls:	TeamTalk Helpdesk 202,2001,200	Number 9

TRUNKED CHANNEL BLOCKS

TOP Trunked Programming Application - Customer Mode - Version 3.5.0

File Radio Networks Tools Internet Help

Open Save Print Read Program Password Add Net Delete Net Prev Net Next Net

Specifications

- Network Settings
 - Trk Chan Blocks
 - Network Identity
 - Network Params
 - Hunting Params
- Fleet Settings
 - Fleet Identity
 - Fleet Parameters
 - Conv Channels
 - DTMF Parameters
- Radio Unit Settings
 - Radio Unit ID
 - Acquisition Data
 - Preset Calls
 - 5 Digit Lookup
 - Call Options
 - Status Labels
 - User Defined Menu
 - Key Settings
 - User Selectable
 - Short Data Messages

Trunked Channel Blocks

Channel Start	Channel Stop	Channel Spacing (kHz)	Start Rx Frequency (MHz)	Start Tx Frequency (MHz)	Tx Deviation	Power Level
1	480	12.50	414.01250	406.01250	Narrow	High

Add Delete

OK Cancel Print Help Network 2: TCL ACTM

Status: Loading from Model: 5040 DBVersion: 0205

NETWORK IDENTITY

TOP Trunked Programming Application - Customer Mode - Version 3.5.0

File Radio Networks Tools Internet Help

Open Save Print Read Program Password Add Net Delete Net Prev Net Next Net

Specifications

- Network Settings
 - Trk Chan Blocks
 - Network Identity
 - Network Params
 - Hunting Params
- Fleet Settings
 - Fleet Identity
 - Fleet Parameters
 - Conv Channels
 - DTMF Parameters
- Radio Unit Settings
 - Radio Unit ID
 - Acquisition Data
 - Preset Calls
 - 5 Digit Lookup
 - Call Options
 - Status Labels
 - User Defined Menu
 - Key Settings
 - User Selectable
 - Short Data Messages

Network Identity

Network

Network Type: National

Network Identity Code: 1

Add Delete

Network Options

SYNC Sequence: C4D7

Area Field Length (LA): 6

Zone Field Length (LZ): 3

SIL Field Length (LSIL): 3

Number of Pressel On Messages (NPON): 1

Number of Pressel Off Messages (NPOFF): 1

Pre-Emphasis: Other

Multiple Registration: Disabled

Value of INFO in RQR: 0

OK Cancel Print Help Network 2: TCL ACTM

Status: Model: 5040 DBVersion: 0205

NETWORK PARAMETERS

TOP Trunked Programming Application - Customer Mode - Version 3.5.0

File Radio Networks Tools Internet Help

Open Save Print Read Program Password Add Net Delete Net Prev Net Next Net

Specifications

- Network Settings
 - Trk Chan Blocks
 - Network Identity
 - Network Params
 - Hunting Params
- Fleet Settings
 - Fleet Identity
 - Fleet Parameters
 - Conv Channels
 - DTMF Parameters
- Radio Unit Settings
 - Radio Unit ID
 - Acquisition Data
 - Preset Calls
 - 5 Digit Lookup
 - Call Options
 - Status Labels
 - User Defined Menu
 - Key Settings
 - User Selectable
 - Short Data Messages

Network Parameters

Control Channel Acquisition/Retention

	Continuous	Time-Shared
NZ1	10	10
NZ2	6	21
TS	5 sec	1
L1	0 dB	2
NC1	10	10
NC2	21	21
NV	1	1
NX1	2	2
NX2	5	5

Background Search Parameters

TL	70 sec	LM1	6 dB
TH	2 slots	LM2	6 dB
NS	2	LM3	6 dB
		LM4	6 dB

Signalling Parameters

NW	4
ND1	3
ND2	5
NE	16
NR	8
TC	60 sec
TD	10 min
TJ	20 sec
TN	7 sec
TT	60 sec
TA	30 sec
TB	2 sec
TP	5 sec
TW	60 sec

OK Cancel Print Help Network 2: TCL ACTM

Status: Model: 5040 DBVersion: 0205 Min Value: 1 Max Value: 255

HUNTING PARAMETERS

TOP Trunked Programming Application - Customer Mode - Version 3.5.0

File Radio Networks Tools Internet Help

Open Save Print Read Program Password Add Net Delete Net Prev Net Next Net

Specifications

- Network Settings
 - Trk Chan Blocks
 - Network Identity
 - Network Params
 - Hunting Params
- Fleet Settings
 - Fleet Identity
 - Fleet Parameters
 - Conv Channels
 - DTMF Parameters
- Radio Unit Settings
 - Radio Unit ID
 - Acquisition Data
 - Preset Calls
 - 5 Digit Lookup
 - Call Options
 - Status Labels
 - User Defined Menu
 - Key Settings
 - User Selectable
 - Short Data Messages

Hunting Parameters

Nokia TS Channel Support

Background Search

Hunt Upon Expiry of NE or NR Preferential

Comprehensive hunt

Act On Vote Now

Vote Now Advice Margin 6 dB

Control Category A

Site Select

Normal Hunt Channels

Channel	Type
22	Continuous
26	Continuous
28	Continuous
36	Continuous
37	Continuous
38	Continuous
39	Continuous
122	Continuous
126	Continuous
128	Continuous
136	Continuous
137	Continuous
138	Continuous
139	Continuous
202	Continuous
206	Continuous
208	Continuous
216	Continuous
217	Continuous
218	Continuous
219	Continuous
302	Continuous
306	Continuous
308	Continuous
316	Continuous
317	Continuous
318	Continuous
319	Continuous
321	Continuous
361	Continuous
453	Continuous
478	Continuous

Add Delete

Non Applicable Channels

From	To
------	----

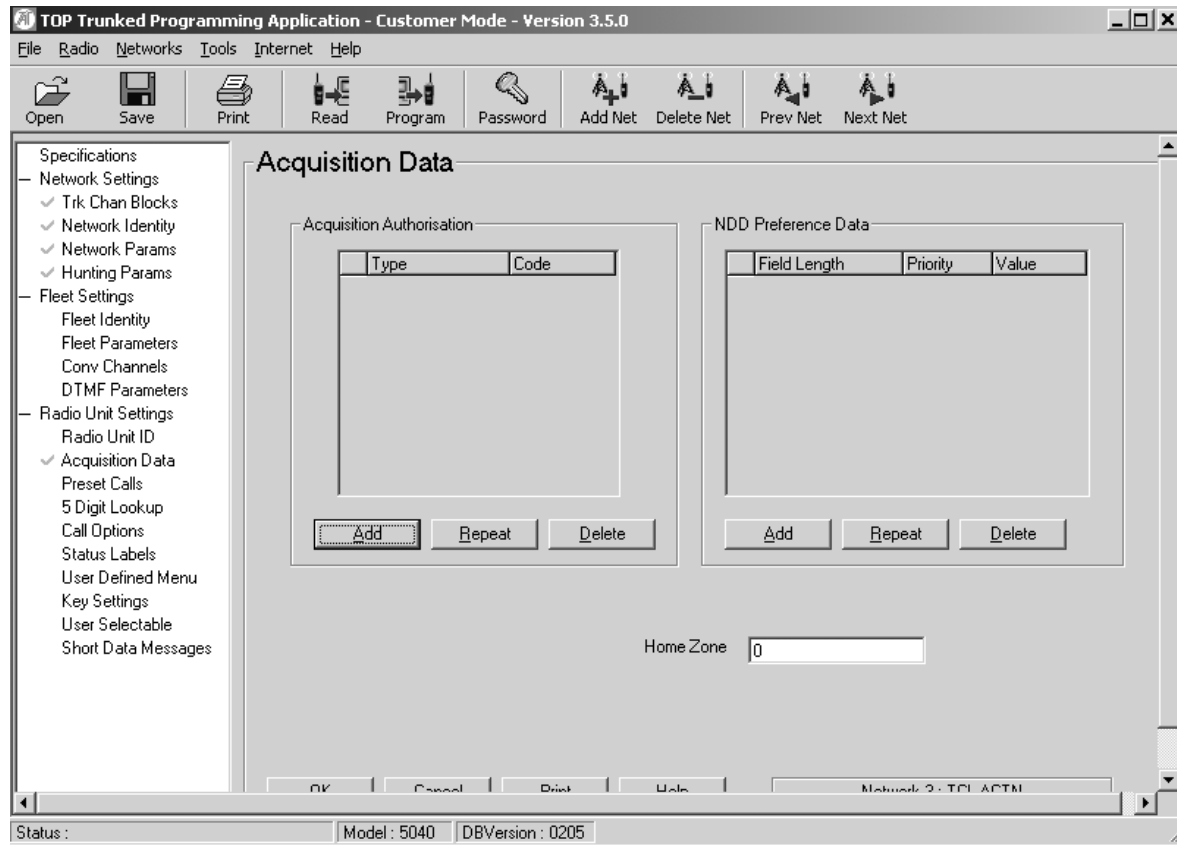
Add Delete

OK Cancel Print Help Network 2: TCL ACTM

Status: Loading form Model: 5040 DBVersion: 0205

Normal Hunt Channel List: 22, 26, 28, 36, 37, 38, 39, 122, 126, 128, 136, 137, 138, 139, 202, 206, 208, 216, 217, 218, 219, 302, 306, 308, 316, 317, 318, 319, 321, 361, 453, 478

ACQUISITION DATA



9. Summary of TeamTalk ActionNet Parameters

VARIABLE		MOBILE	PORTABLE	
NC1	CONT	20	10	LOWEST CHANNEL 1
NC2	CONT	15	21	HIGHEST CHANNEL 480
NX1	CONT	4	2	
NX2	CONT	4	5	
NZ1		1	1	COMPREHENSIVE HUNT OFF
NZ2		2	6	BACKGROUND HUNT ON
ND1		3	3	VOTE NOW ON
ND2		5	5	
NE		16	16	
NI		4	4	
NR		8	8	
NT		103	103	
NW		4	4	
TA		30	30	
TB		2	2	
TC		60	60	
TD		10	10	
TI		2	2	
TJ		20	20	
TN		7	7	
TP		5	5	
TS		5	5	
TT		60	60	
TW		60	60	
TL		70	70	
TH		2	2	
NS		2	2	
NV		1	1	
LM1		6	6	
LM2		6	6	
LM3		6	6	
NPON		1	1	
NPOFF		1	1	
LA		6	6	
LZ		3	3	
LSIL		9	9	
VOTE NOW LEVEL		6	6	
HOME ZONE		0	0	
N VOTE		1	1	
T VOTE		10	10	
LM VOTE		6	6	

CHANNELS 22, 26, 28, 36, 37, 38, 39, 122, 126, 128, 136, 137, 138, 139, 202, 206, 208, 216, 217, 218, 219, 302, 306, 308, 316, 317, 318, 319, 321, 361, 453, 478

NOTE ALL TAIT T700 AND T500 RADIOS NEED TO HAVE COMPREHENSIVE HUNT TURNED ON TO STOP RADIOS LOGGING OFF WHEN THEY CAN NOT FIND A SITE IN THE NORMAL HUNT LIST

10. Other Equipment Manufactures Summary

TeamTalk TaitNet Network Parameters 21 May 2001 For other Manufactures Equipment						
Variable Name		Mobile	Portable			
NC1	CONTIN	30	25		Lowest Chan	7
NC2	CONTIN	20	20		Highest Chan	480
NX1	CONTIN	6	5		FPP	O
NX2	CONTIN	6	6		MEP	O
NZ1		1	1	Comprehensive hunt		On
NZ2		2	6	Background Hunt		On
ND1		3	3			
ND2		5	5	Network type		National
NE		16	16	Network ID		0
NI		4	4	Dialing Scheme		MPT1343
NR		8	8	Control category		A
NT		103	103	Full off air call set up		Yes
NW		4	4	Default call time limit		180 sec
TA		30	30	Emg call time limit		780 sec
TB		2	2	Data call time limit		180 sec
TC		60	60	Call timer count up		No
TD		10	10	Ignore TSC call time limit		No
TI		2	2	Nokia TS support		No
TJ		40	40	Act on vote now		Yes
TN		10	10	Ignore LAB sub filed		No
TP		5	5	<i>Freq Range start channel 1</i>		
TS		5	5	RX	414.01250	
TT		60	60	TX	406.01250	
TW		60	60			
TL		90	90			
TH		2	2			
NS		2	2			
NV		1	1			
LM1		6	6			
LM2		6	6			
LM3		6	6			
NPON		1	1			
NPOFF		1	1			
LA		7	7			
LZ		3	3			
LSIL		0	0			
VOTE NOW LEVEL		6	6			
HOME ZONE		0	0			
N VOTE		1	1			
T VOTE		10	10			
LM VOTE		6	6			

Channels (control)

121,123,124,125,127,129,133,134,135,140,201,203,204,205,207

209,213,214,215,220,301,303,304,305,307,309,310,311,312,313,314,315